



2019 Annual General Meeting

The NAPEG Annual General Meeting was held on Wednesday, March 13, 2019 with over 50 members, guests, and staff in attendance. NAPEG had a surplus year and also a busy year. You can read all about it within the two Annual Reports on the website. Thank you to all who attended the AGM and President's Reception. Hope to see you again next year.



Inside this issue:

| | |
|---|---|
| Finnigan Award Recipient - Nunavut | 2 |
| Registration Changes | 3 |
| Registration Changes (continued) | 4 |
| 2019 CPD Symposium Photos | 5 |
| Contact Information | 6 |
| Scholarships | 6 |

Events:

- **Council Meeting - May 10, 2019**
- **Engineers Canada AGM - May 23-25, 2019**
- **Geoscientists Canada AGM - June 14-15, 2019**

- **2020 NAPEG AGM - March 11, 2020**
- **Awards Banquet - March 12, 2020**
- **CPD Symposium - March 12-13, 2020**

2019 Finnigan Award Recipient - Nunavut



Erin Bros
MSc Candidate
Structural Geology & Tectonics
University of Alberta

The Mary River Group are a package of 2.7 - 2.8 billion year-old rocks exposed on northern Baffin Island. They consist of metamorphosed volcanic and sedimentary rocks, banded iron formation and appreciable quantities of iron ore. Although the iron ore deposits are well characterized at Baffinland's Mary River mine site, there is still much about the Mary River Group that remains poorly constrained, including its depositional setting, and the nature and significance of the post-depositional deformation and metamorphism recorded by these rocks. The aim of this thesis is to conduct detailed geological mapping of a greenstone succession interpreted as the Mary River Group in the Long Lake area, and in doing so, better constrain the geological history of northern Baffin Island.

Detailed geological mapping at a 1:30k scale was conducted at Long Lake in the western Tuktuiliavik Region, 60km southwest of Pond Inlet during July - August 2017 and July 2018. Four east-west traverses were completed in 2017, followed by one further east-west and one north-south traverse in 2018. Rock samples were collected for petrography and whole rock geochemistry. Initial unit characterization based on field mapping and petrography were corroborated with geochemistry. The geologic bedrock map produced is being used to outline the stratigraphy and structure of the greenstone succession as a basis for better defining the Mary River Group at Long Lake. The whole-rock geochemistry is also used to constrain the broad depositional environment and tectonic setting for these rocks.

While the field, petrographic and geochemical work I am undertaking is detailed, my research is motivated by the wider goal of understanding greenstone belt formation and their associated mineralization.

An enhanced understanding of ironstone deposition, and the volcanic environment that the Mary River Group formed in, adds to our understanding of the Archean geological evolution of Baffin Island, the northern Rae Craton. More specifically to the geology of northern Baffin Island, the refined geological history that I am working on establishing will aid the search for iron and prospective gold mineralization.



I am a field geologist with a passion for being in the mountains. I have been working for the last six years with various geological surveys in northern and western Canada, and my favourite place to map is on Baffin Island. My MSc is a mapping-based thesis that aims to define the supracrustal rocks of the Mary River Group, on northern Baffin Island. My supervisor is Dr. Stephen Johnston at the U of A. I was privileged to take on this graduate research being a senior mapper on the North Baffin Project with the Geological Survey of Canada. I am humbled to be receiving this award and am looking forward to presenting my research in Iqaluit!

Registration Changes - March and April 2019

Note: Registration is not complete until fees are paid in full.

Member-in-Training

Jacob P. Cocquyt, EIT
Joanna M. Pieczka, EIT

Member

Mohamad (Mukit) M.R. Chowdhury, P.Eng.
Maxime Gaudreau, P.Eng.
MD Saydul Islam, P.Eng.

Licensees

Ross D. Abdurahman, P.Eng.
David C.M. Bellamy, P.Eng.
Salim Bennamoun, P.Eng.
Justin A. Bieber, P.Eng.
Alija G. Bos, P.Geo.
Harold Brisson, P.Eng.
Guillaume Brown, P.Eng.
Dominic Chartier, P.Geo.
Dragos A. Cosovanu, P.Eng.
Stephen D. Cross, P.Eng.
Jan C. Dale, P.Eng.
Louis-Jean H. Delisle, P.Eng.
David A. Field, P.Eng.
Luis H. Forero, P.Eng.
Pierre-Luc Forest, P.Eng.
Jena F. Gilman, P.Eng.
Andrew J. Heaton, P.Eng.
Alexandar R. Jelenic, P.Geo.
Raquel M. Labranche, P.Eng.
Julien C. Lacrampe, P.Eng.
T.M. Fabien Leung, P.Eng.
Gary R. Low, P.Geo.
Jerome Robert Martel, P.Eng.
Spencer J. Maxwell, P.Geo.
Carl J.M. Messier, P.Eng.
Said Mokhater, P.Eng.
Oleg L. Orlovskyy, P.Eng.
Michael K. Palamarek, P.Eng.
Nicolas Paquette, P.Eng.
Carl Pelletier, P.Geo.
J. Lynn Pilgrim, P.Geo.
Johnathan M. Pomerleau, P.Eng.
Richard A. Porter, P.Eng.
Julie Potvin, P.Eng.

Benoit Rancourt, P.Eng.
Ian Russell, P.Geo.
Christopher R. Shortall, P.Eng.
Manoj. K. Singh, P.Eng.
Colin M. Smith, P.Geo.
Kevin (Kam) So, P.Eng.
Mie Takahashi, P.Eng.
Ian D. Trinder, P.Geo.
Rebecca F. Van Hattem, P.Eng.
Li Jun Zhang, P.Eng.

Change from Non-Practicing to Active

John A. Brophy, P.Geo.
Carl E. Hentschel, P.Eng.

Change from Active to Non-Practicing

Jeffrey Kempson, P.Eng.
Volker W. Neth, Ph.D., P.Eng.
Anthony P. Silva, P.Eng.
Oscar J. Wasilik, P.Eng.
Andrew Wilson, P.Eng.
Wojciech Zawadzki, P.Geo.

Permit to Practice

CSA Global Consultants Canada Ltd.
Cybertech Automation Inc.
GE Renewable Energy Canada Inc.
PBX Engineering Ltd.
Rowan Williams Davies & Irwin Inc. o/a RWDI
Sitar & White Architecture and Engineering Ltd.
Solstice Gold Corp.

Permit to Practice Name Change

Dominion Diamond Mines ULC (formerly Dominion Diamond Ekati Corporation DDEC)
Eclipse Engineering, P.C. (formerly Eclipse Engineering, Inc.)
Precision Forensics Inc. (formerly Snihur Engineering Inc.)
ValOre Metals Corp. (formerly Kivalliq Energy Corp.)

Note:

NAPEG Non-Practicing Category means the professionals are not currently practicing in the NT or NU. The registrants may be actively practicing in other jurisdictions.

Very Important:

If you have not renewed for 2019 or sent your resignation to NAPEG (if no longer practicing in the Northwest Territories or Nunavut) make sure to do so right away.

Registration Changes - March and April 2019 (continued)

Firm and Individual Cancellations/Resignations

Permit to Practice Cancellations (Firms) (effective December 31, 2018)

Cana High Voltage Ltd.
Chiarelli Engineering Management Ltd.
FWD Engineering Ltd.
Gwich'in Geomatics Ltd.
J.Starr Engineering Incorporated
Latera Engineering Inc.
PND Engineers Inc.
Westman Steel Industries o/a Canada Culvert

Individual Registrant Resignations (effective December 31, 2018)

Alan (Lee) Barker, P.Geo.
Laura J. Boone, P.Eng.

Geoffrey E. Dunbrack, P.Eng.
Kristin N. Foster, P.Eng.
Julio C. Garcia, P.Eng.
Klaus H. Geithner, P.Eng.
Mark F.M. Hall, P.Eng.
Ryan M. MacDonald, P.Eng.
Michel M. Maillet, P.Eng.
Rhys P. Previte, EIT
Cameron K. Robinson, P.Eng.
Courtland Smith, P.Eng.
Martin J.G. Turgeon, P.Eng.
Leandre J.C. Veillette, P.Eng.
Hui Wang, P.Eng.
Justin S. Waugh-Cress, P.Eng.
Ian T.R. Waymann, P.Eng.
Hao (Charlie) Zheng, P.Eng.

Definitions:

“Professional Engineering” means any act of planning, designing, composing, measuring, evaluating, inspecting, advising, reporting, directing or supervising, or managing any of those acts, that requires the application of engineering principles.

“Professional Geoscience” means any act of documenting, analyzing, evaluating, interpreting or reporting on the earth’s materials or on resources, forms or processes, or managing any of those acts, that requires the application of the principles of geology, geophysics or geochemistry.

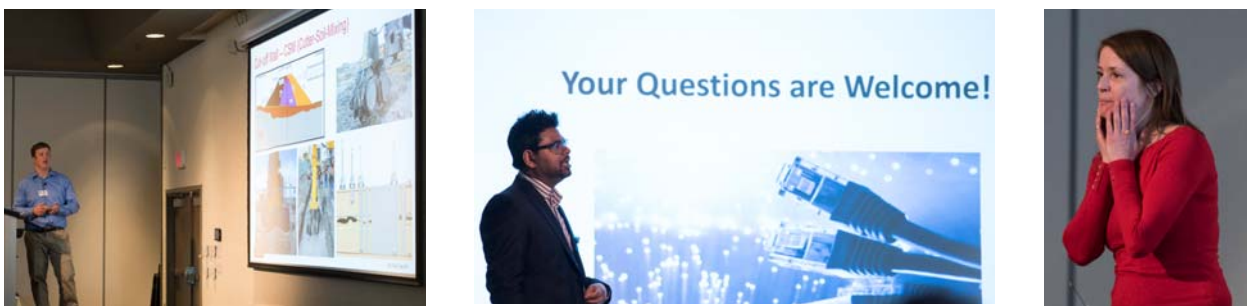
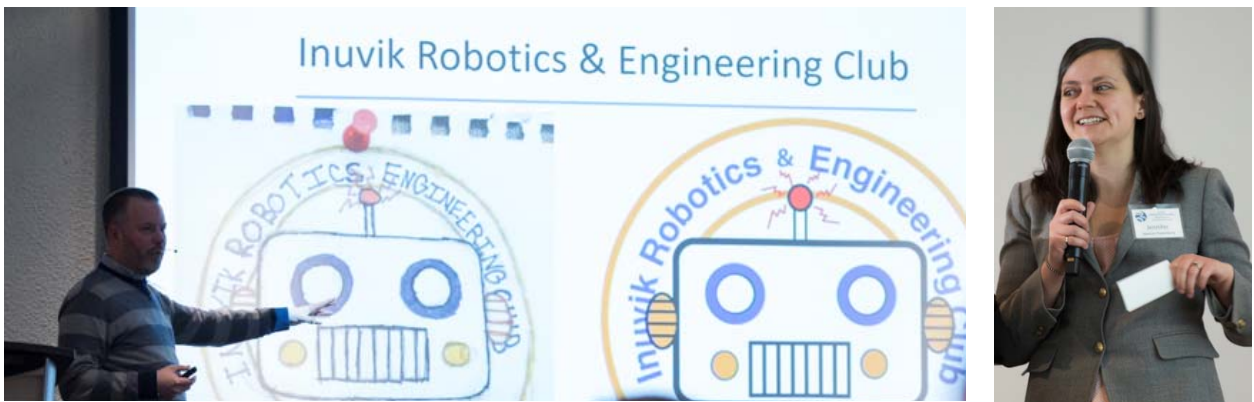
The Acts require that firms (*defined as partnerships, corporations, and associations of persons*) practicing engineering and/or geoscience in the Northwest Territories and/or Nunavut must have a Permit to Practice. The requirements concerning Permits to Practice are described in Sections 11 and 23 of the NWT Act and Sections 3 and 5 of the Nunavut Act. A sole proprietor (*who is not incorporated and not practicing through a firm*) is not required to hold a Permit to Practice.

The Permit to Practice signifies that:

- a) The firm maintains a structure that fosters professional practice;
- b) The work is carried out by skilled professionals, licensed by NAPEG, to practice in the NT/NU;
- c) The business of the firm, related to Engineering and Geoscience, is carried out in accordance with the Code of Ethics;
- d) Quality control procedures are in place to produce complete and accurate documents;
- e) The firm is professionally responsible for the integrity of all stamped documents generated in its practice.

2019 Professional Development Symposium - Day One

Thank you to the NAPEG Professional Development Committee, NAPEG Council, and Staff for another successful Professional Development Symposium. The committee has been chaired by **Justin Hazenberg**, P.Eng. for several years and the conference has grown significantly in attendance. The venue is The Explorer Hotel where we have consistently received great service. Thanks also to **Mimi Kennedy-Chassie**, Deputy Registrar, who is the primary staff support for the committee. Other members of the committee include: Kevin McLeod, P.Eng.; Diep Duong, P.Eng.; Kevin Bolstad, P.Eng.; Jennifer Spencer-Hazenberg, P.Eng.; Katrina Nokleby, P.Eng.; Philip Lewis, P.Eng.; Bhabesh Roy, P.Eng.; Beth Cowan, P.Eng.; and Linda Golding, FEC/FGC (Hon.)



DESK OF EXECUTIVE DIRECTOR /
REGISTRAR

NAPEG
201, 4817 - 49 Street
Yellowknife, NT
X1A 3S7

Phone: 867-920-4055
Fax: 867-873-4058
E-mail: registrar@napeg.nt.ca

www.napeg.nt.ca



NAPEG Council

President: Karen Costello, P.Geo., FGC
1st Vice President: Justin Hazenberg, P.Eng.
2nd Vice President: Mark Cronk, P.Eng.
Past President: Sudhir Jha, P.Eng., FEC
Councillors: Pamela Strand, P.Geo.
Katrina Nokleby, P.Eng.
Yuri Kinakin, P.Geo.
Melanie Williams, P.Eng.
Elaine Gillespie, P.Eng.
Ryan Schuler, P.Eng.
Appointed Public Members: Chris Hunt
James Arreak

National Directors

Engineers Canada Director: Terry Brookes, P.Eng., FEC
Geoscientists Canada Director: Yuri Kinakin, P.Geo.

NAPEG Staff

Executive Director/Registrar: Linda Golding, FEC/FGC (Hon.)
Deputy Registrar: Mimi Kennedy-Chassie
Finance and Admin: Bora Sung
Registration and Admin: Ashley Chassie
Professional Practice: Peter Bengts, P.Eng.

NAPEG Mission

*In the public interest, NAPEG regulates and supports the professional practice of engineering and geoscience
in the Northwest Territories and Nunavut.*

If you are a NAPEG Member continuing your education full-time at university, please note that the deadline to apply for the Graduate Studies Scholarship is August 15. Check the NAPEG website for details.

Mel Brown and Bob Spence Memorial Scholarships

Two \$2,000.00 scholarships are available to Northwest Territories or Nunavut students entering or attending post secondary studies leading to a degree in Engineering or Geosciences at an undergraduate level in a recognized Canadian university. Preference is given to highly motivated individuals with a strong academic background and demonstrated citizenship and leadership capabilities.

Applications are due September 30 each year.